

**SINGLE  
TRICOLOR  
BARGRAPH**

**NOW  
USB**

**1/8 DIN AUTOMATIC TRICOLOR  
BARGRAPH/CONTROLLER  
WITH SERIAL I/O, ANALOG I/O & RELAYS**

**MODEL  
DIN-BAR**

**NUCLEAR, SEISMIC & MIL-SPEC** versions of the "**DIN-BAR**" are available, including NVG-3 (Night Vision 3<sup>rd</sup> Generation). Contact OTEK For Specific Information

**DESCRIPTION:** The **DIN-BAR** was specifically designed to replace (form & fit) the old electromechanical bargraphs, with 21<sup>st</sup> Century Technology exclusive to **OTEK**, the originator of the Automatic Tricolor Bargraph P.I.C. (Programmable Intelligent Controllers). The only similarity is the panel cut out, mounting and bezel. The rest is all OTEK's proven design with thousands of units installed from Space Stations to Military, Petrochemical, Pharmaceutical, Transportation and other critical industries (all products have a **LIFETIME (LTD) WARRANTY.**)

The New "**DIN-BAR**" is enclosed in a standard 1/8 Din NEMA 4X Housing and includes plug-in screw terminal connectors for all I/O, except the Serial "RS" which uses a "**DB-9**" Connector. It can be used as a remote display (serial input) for PLC, DCS, SCADA or Stand Alone with Analog I/O with 4 Relays. Power Inputs for 5VDC, 10-32VDC, 18-75VDC or 90-265VAC are available.

The 51 Segment Bargraph changes color automatically upon reaching programmable limit(s) and can be configured for dimming and blinking. The digital display (4 digits) provides 0.1% resolution. The Math Functions (Floating Point Math) allow scientific calculations, such as Polynomials (9<sup>th</sup>), X-Y Tables and Flow Calculations.

**New USB V2.0 Compatible:**

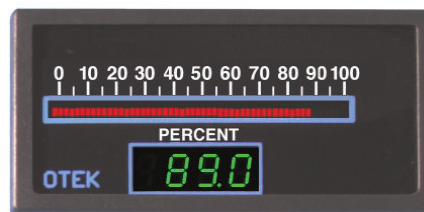
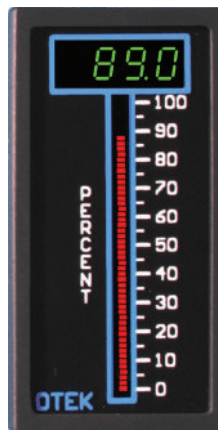
The USB-232 converter plugs into the **DB9** connector and extends 1.25" on the rear. Has standard "Client" connector.

**OTEK's Exclusive Windows Navigator G.U.I.**  
100% configuration within minutes without lengthy  
Instruction Manuals (AND IT IS FREE!)

**FEATURES**

- \* Replaces Sigma 9263 & Dixon BT033P, But New Technology
- \* Math Functions +, -, x, √
- \* Polynomials, X-Y Tables
- \* 1 or 2 Analog Inputs (18 Bits)
- \* Bargraph & 1, 4 Digit Display
- \* Optional Isolated Analog Output 4-20mA or 0-5VDC
- \* Optional 5A Relay Output (4)
- \* Front Panel Replaceable Filter & Scale
- \* Isolated USB RS232C/422/485
- \* NEMA 4X Front Panel

**VERTICAL MOUNT**



**HORIZONTAL MOUNT**



**IF YOU DON'T SEE IT  
ASK FOR IT!**

**SPECIFICATIONS**

**Serial Communications:** Isolation to 5V or Other Inputs: 500VDC Minimum, Baud Rate: To 19.2K, Protocol: Full ASCII, Concurrent Use of RS-232C & 422 or RS-232C & RS-485 I/O.

**Power Inputs:** 5VDC ± 5% Non-Isolated, Or 10-32VDC Isolated, Or 90-265VAC or 18-75VDC Isolated, Power Consumption: 5 Watts Max.

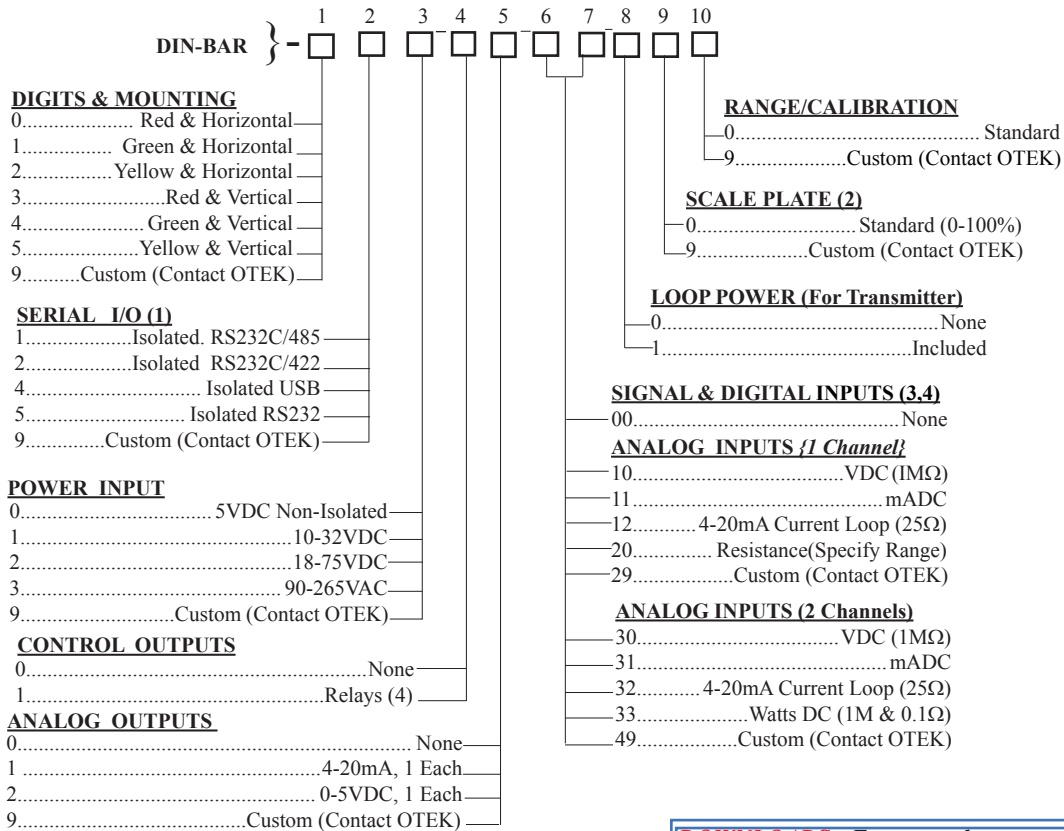
**On-Off Control Outputs Relays (4):** Type: S.P.D.T. (1C), Max. Switching Current: 5A Res., Max. Switching Voltage: 240VAC @ Rated Current, Contact Protection: Included.

**Analog Control Outputs:** Accuracy & Linearity: ± 0.01% F.S., Resolution: 16 Bits, Outputs: 0-5VDC (>100KΩ) 4-20mA (<1KΩ), Custom Output: 0-20, Compliance Output: 30VDC @ 30mA, Isolation: 500VDC.

**A/D CONVERTER:** 18-Bit Plus Sign A/D, Display Resolution: ± 0.1% of F.S., Accuracy: ± 0.01% of Full Scale, Linearity: ± 0.01% of Full Scale, Zero: Automatic/Programmable, SPAN: Programmable, F.S. Input Voltage Range: ± 50VDC, Max. Current Range: 20mADC, Sampling Rate: 16/sec. ÷ by Channels, Input Type: Single Ended/Diff., Input Bias: 50pA, C.M.V.: ± 2VDC, CMR: >90dB, Averaging (Weighted): None to 40, Input Impedance: See Ordering Information.

**Environmental:** Operating Temperature: -10 - 55°C, Storage Temperature: -20 - 65°C, Humidity: 10 - 90% RH, N.C., MTBF: >100,000 Hrs. Per Mil-Handbook 217G, NEMA 4X (IP65).

# DIN-BAR MECHANICAL & ORDERING INFORMATION 2-26-13

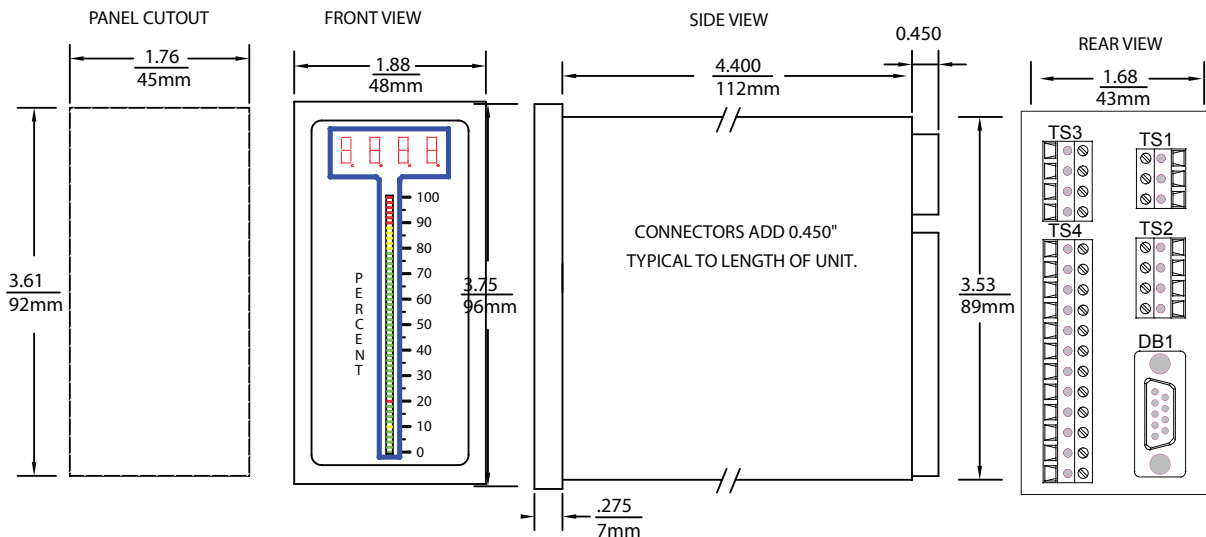


**DOWNLOADS:** For manuals, user-software or drivers:  
[www.otekcorp.com](http://www.otekcorp.com)

**NOTES:**

1. USB option extends 1.25" from rear of instrument.
2. Contact OTEK for custom scales/overlays.
3. Volt & Amp ranges are internal jumper range selectable .5, 5, 10 & 50VDC; 1, 5 & 20mA. Shipped with .5V or 1mA unless specified.
4. Digits 6 & 7 option 00 is for a remote display/controller only.

**MECHANICAL**



520-748-7900  
 FAX: 520-790-2808  
 E-MAIL: sales@otekcorp.com  
<http://www.otekcorp.com>



4016 E. TENNESSEE ST.  
 TUCSON, AZ. 85714 U.S.A.

