

RTD TEMPERATURE 3½ DIGIT LCD DPM "Flat Pack" No Panel Cut Out Required (NEMA 3 or NEMA 4X)

MODEL
527



FLAT PACK

Features

- Only ½" Deep
- Built-in Open RTD Alarm
- 2 or 3 Wire RTD
- Automatic Lead Compensation
- High Contrast 0.5" LCD
- °F or °C and PT100, ASA or 10Ω Copper
- MTBFC: 80,000 Hours



SANITARY CASE

DESCRIPTION: Model 527 is offered in Otek's unique Flat Pack. Alpha of 0.00385Ω/Ω/°C (DIN); 0.003923Ω/Ω/°C (ANSI) or 10 Ohm copper elements are accurately conditioned for reliable temperature control. An analog comparator is included that indicates an open RTD sensor condition by -1 on the display.

HOUSING: Otek's Flat Pack requires no panel cut out. Just drill a 10mm (3/8") Ø hole, pass the wires through, attach the provided double-sided tape (to prevent rotation), align the flat pack, tighten the nut and make the connections to the wires. No connector or tools required! No behind the panel space needed! The case is U.L. approved ABS Polycarbonate 94VO rated. **NEMA 4X housing option does not have access to the adjustments. If other than Otek's standard setting is required, please specify at the time of ordering.** Our New Sanitary housing is wall, pipe or panel mount and can include 2 flat packs, please specify.

POWER SUPPLIES: Externally mounted. Two types are available, the "Open Frame" style accepts 120/240VAC and delivers 5VDC up to 400mADC. The "Power Pack" is a wall plug in module available only for 120VAC input and delivers 5VDC up to 100mADC.

SPECIFICATIONS AT 25°C

Drift vs Temperature	50 PPM/°C
Accuracy and Linearity	± 1% ± 1 Count
Input Type	2 or 3 Wire RTD
Input Protection	± 5VDC
Power Requirements	5VDC at 20mA
Operating/Storage Temp	-10° to +60°C / -20° to +70°C
CMRR	90 dB
CMV	± 3VDC
Maximum Excitation Current	1 mA
Lead Resistance Compensation	20 OHMS
Display	3½ Digit, 5" Reflective LCD
MTBFC	80,000 Hours
Sanitary Case	NEMA 4X up to 250°F Steam Cleaning

LEAD COLOR

TERMINAL DESCRIPTION

YELLOW	POSITIVE SENSE LEAD: Connect to the positive output of the RTD (White).
ORANGE	DECIMAL POINT COMMON: Connect desired Decimal Point (1 only) to this lead.
RED	+5VDC IN: Connect a +5VDC ± 10% power supply with a 20mA source capability.
WHITE	NEGATIVE SENSE LEAD: Connect to the negative output of the RTD (Red).
BLACK	GROUND: Return for ± 5VDC.
GREEN	SIGNAL COMMON: Connect to compensating lead of RTD for 3 wire or to White for 2 wire type.
BLUE	ANALOG OUT: > 1mV/count, 0.1 mA MAX, reference to Green.
VIOLET	DECIMAL POINT 1.XXX: Connect to Orange to energize.
GRAY	DECIMAL POINT 1X.XX: Connect to Orange to energize.
BROWN	DECIMAL POINT 1XX.X: Connect to Orange to energize.

NOTE: For 3 wire RTD: Connect one Red to Green, the other Red to White.
For 2 wire RTD: Jumper White and Green and connect RTD's Red to them.

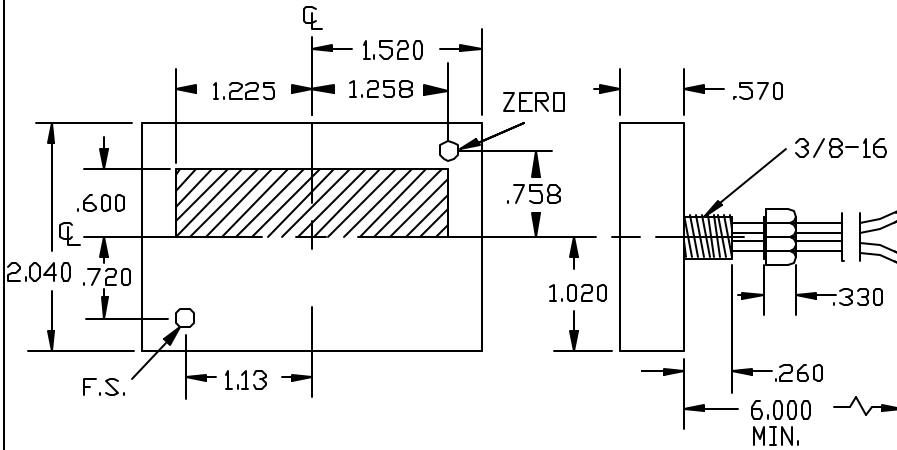
ORDERING INFORMATION (11/1/00)

MODEL 5 2 7 0

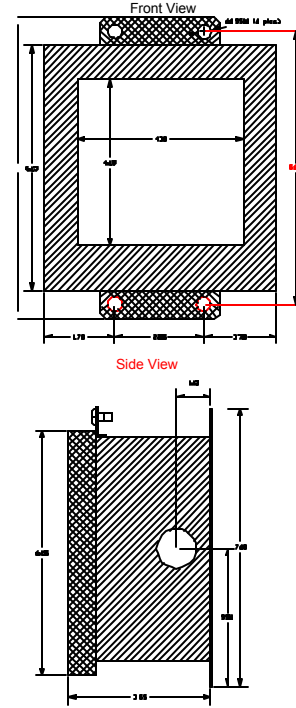
<p>INPUT RANGE</p> <p>0 200.0°C DIN</p> <p>1 2000°C DIN</p> <p>2 200.0°F DIN</p> <p>3 2000°F DIN</p> <p>4 20.0°C ANSI</p> <p>5 2000°C ANSI</p> <p>6 200.0°F ANSI</p> <p>7 2000°F ANSI</p> <p>8 200.0°C Copper</p> <p>9 200.0°F Copper</p>	<p>POWER INPUT(2)</p> <p>0 5VDC</p> <p>1 Open Frame 120/240VAC</p> <p>2 Power Pack 120VAC</p> <p>HOUSING(1)</p> <p>0 NEMA 3</p> <p>1 NEMA 4X</p> <p>2 Sanitary</p> <p>(1) See NEMA 4X note in "Housing" section above.</p> <p>(2) See "Power Supplies" section above.</p>
--	---

TEMPERATURE RTD

FLAT PACK W/WIRES

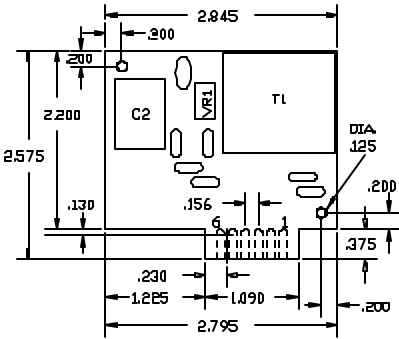


SANITARY CASE

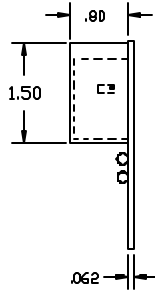


OPEN FRAME STYLE
P/N 81-3110, 5VDC OUTPUT
P/N 81-3113, 24VDC OUTPUT

MECHANICALS FOR POWER SUPPLIES

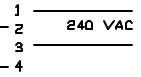
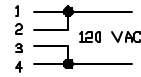


SIDE VIEW



OPEN FRAME
POWER SUPPLY
TYPICAL CONNECTIONS

INPUTS

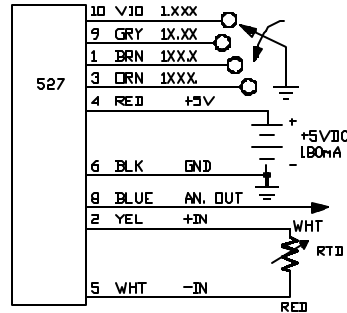


OUTPUTS

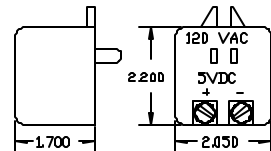


P/N 81-3110, 5VDC OUT
P/N 81-3113, 24VDC OUT
(FOR TRANSMITTER)

TYPICAL CONNECTIONS FOR RTD INPUT

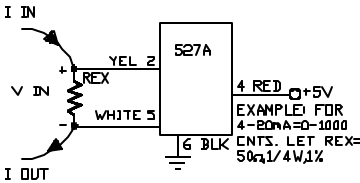


POWER PACK STYLE



ORDER P/N 75-3110 FOR 5VDC
AND/OR
ORDER P/N 75-2400 FOR 24VDC
(FOR TRANSMITTER)

CONNECTIONS FOR CURRENT LOOP INPUT



F#87MC527.DWG

FAX: 520-790-2808
E-MAIL: sales@otekcorp.com
TOLL FREE: 1-877-227-6835

520-748-7900

OTTEK™ CORP.

SINCE 1974

4016 E. TENNESSEE ST.
TUCSON, AZ. 85714 U.S.A.

MADE
IN
USA

