

**NOW
USB**

TO BE DISCONTINUED - SEE UPM-3

Programmable Intelligent Controller

**MODEL
HI-Q126**

WITH TRIPLE SIX (6) DIGIT LED DISPLAY



**HI-Q126 with Optional
Menu Driven Keypad!**

- Large 0.6" LED Digits
- Programmable Dimming & Blinking
- Custom Colors
- Custom Legends

FEATURES:

- New Sanitary Case
- Triple six(6)Digit Display with D.P.
- Isolated 18-bit A/D (50K Counts)
- 5V, 10-32VDC; 24 or 90-265 VAC Power (7W For LED)
- Isolated 16-Bit 4-20mA or 0-5VDC Output
- Four 10A Relays or 8-1/4A O.C.T.
- Isolated USB RS-232C/422/485
- 1, 2 or 3 Channel Input
- Menu Driven Keypad (Optional)
- NEMA 4X Front Panel (IP65)
- Math Functions: +, -, x, ÷, √ & More
- All Displays Independent
- Display Blinking, Dimming, Blank
- 8 Alarm Annunciators
- Polynomials
- Look Up Tables

New USB V2.0 Compatible:

The USB-232 converter plugs into the **DB9** connector and extends 1.25" on the rear. Has standard "Client" connector.

SANITARY CASE



NEW SANITARY CASE !

- Only 6 X 6 X 3" Aluminum
- Double Gasketed with 3/4" Hole For Pipe
- High Temperature/Impact Resistant Window
- Wall/Panel/Pipe Mounting
- Up to 250°F Steam Cleaning
- Water Tight/Submersible

**IF YOU DON'T
SEE IT
ASK FOR IT!**



**Specifications:
See Pages A-D**

APPLICATIONS:

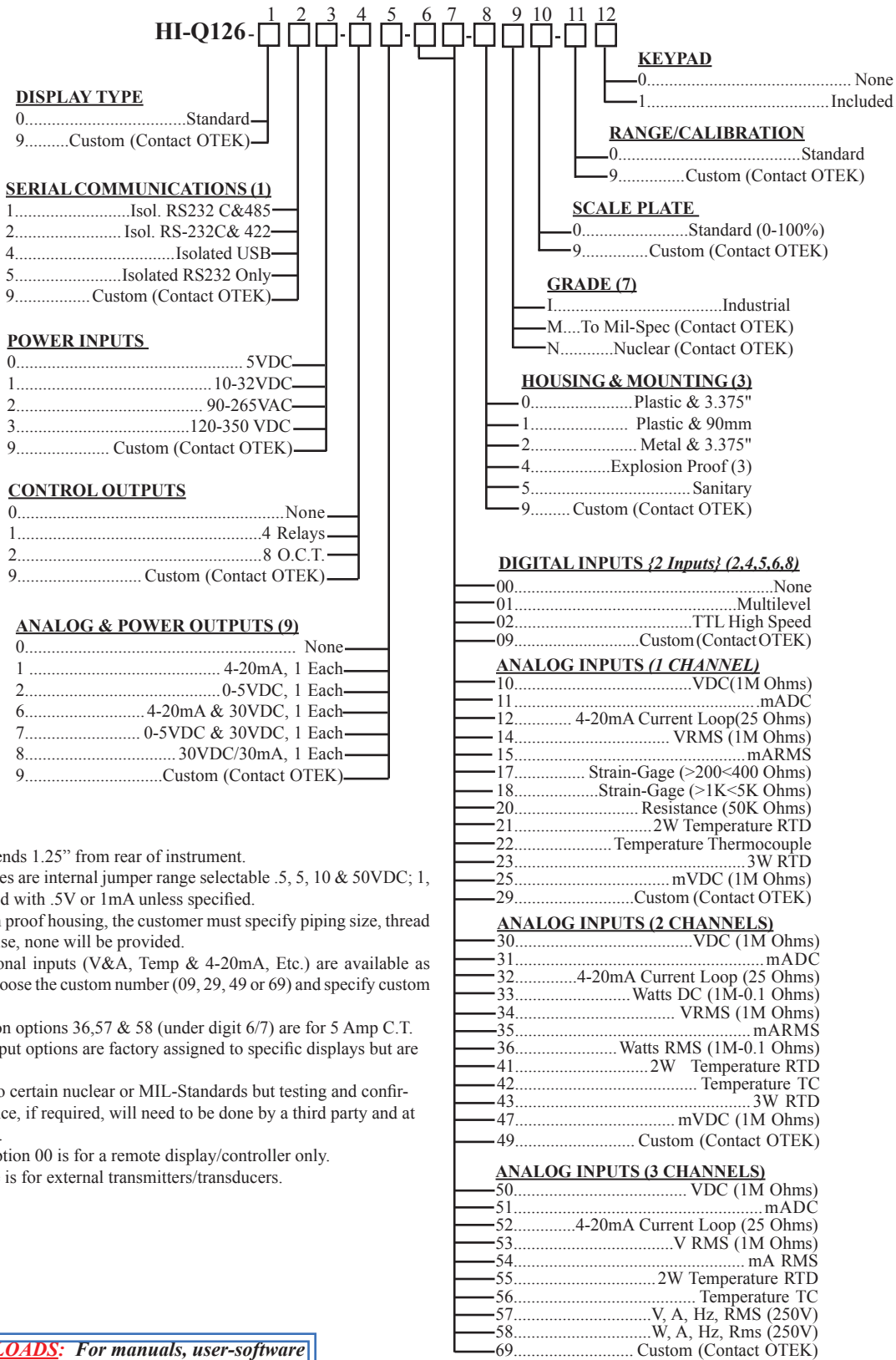
- Display/Control of any 1, 2 or 3 Variables, such as: V, A & Hz; Temp, Humidity, Flow
- Display/Control of Any Two Variable with their Product Displayed/Controlled, such as: V•A=W; V•A=Vars; V,A,HZ; Ah, Wh Temp & Humidity=Dew Point; Volume in
- Temp. Correction=Real Volume; X-Y-Z Positioner, Speed-RPM-Distance
- Display/Control of Any One or Two Variables Modified by Any Math Function to Display/Control their Product

WHAT IS IT ?

- ◆ It is a Programmable Logic Controller (P.L.C.)
- ◆ It is a Computing Controller
- ◆ It is a DCS to Process Interface
- ◆ It is a Process to SCADA Interface
- ◆ It is a Single Loop Process Controller
- ◆ Or Just a *Plain METER*

EXPLOSION PROOF:

- Approved for: Class I Div 1 & 2 Groups B, C & D; Class II Div 1 & 2 Groups E, F & G; Class III Nema 3,4,7 & 9,FM, CSA, Baseefa & Cenelec Certified
- Tempered Glass Window
- Aluminum Casted Housing

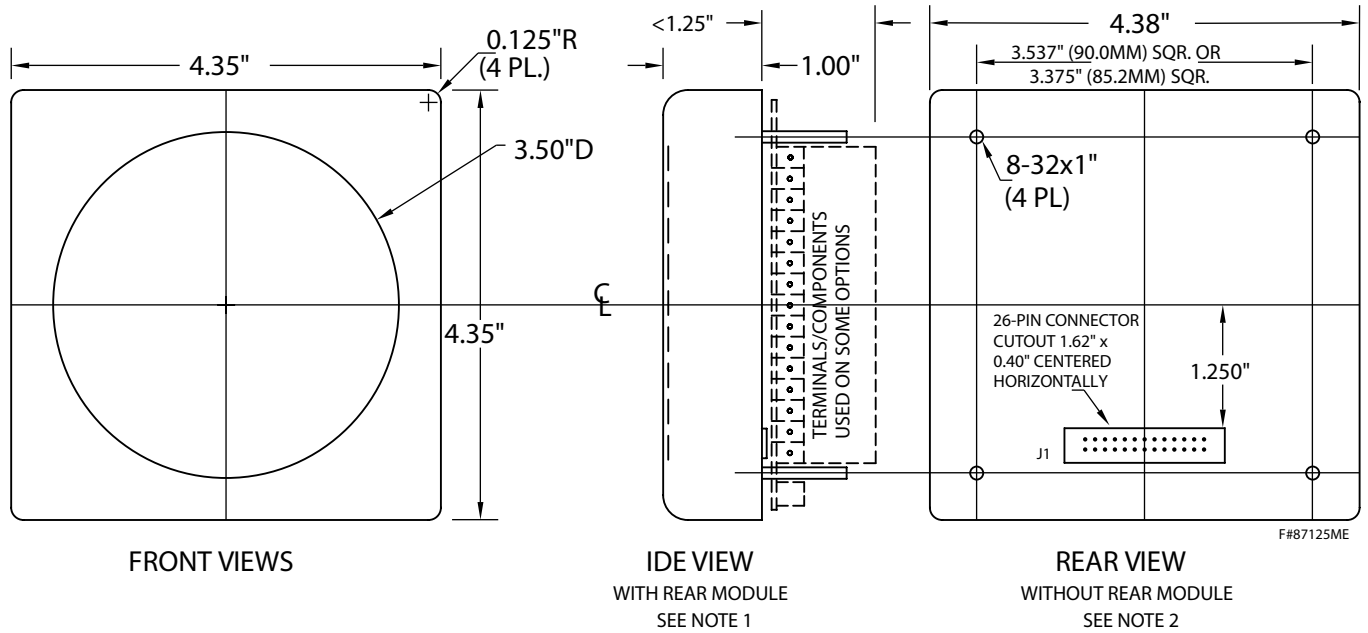


NOTES:

1. USB option extends 1.25" from rear of instrument.
2. Volt & Amp ranges are internal jumper range selectable .5, 5, 10 & 50VDC; 1, 5 & 20mA. Shipped with .5V or 1mA unless specified.
3. For the explosion proof housing, the customer must specify piping size, thread & location; otherwise, none will be provided.
4. Mixed or additional inputs (V&A, Temp & 4-20mA, Etc.) are available as customizations. Choose the custom number (09, 29, 49 or 69) and specify custom requirements.
5. AC amp ranges on options 36,57 & 58 (under digit 6/7) are for 5 Amp C.T.
6. Multi-channel input options are factory assigned to specific displays but are field configurable.
7. Otek will build to certain nuclear or MIL-Standards but testing and confirmation of compliance, if required, will need to be done by a third party and at customer's expense.
8. Digits 6 & 7, Option 00 is for a remote display/controller only.
9. 30V compliance is for external transmitters/transducers.

DOWNLOADS: For manuals, user-software or drivers:
www.otekcorp.com

MECHANICAL FOR ALL OTEK'S "SWITCHBOARD" STYLE METERS



Note:

1. Models HI-Q126-X00-000-0X (X=any option) do not require piggy back module that plugs on J₁ connector from behind your panel, all others do.
2. J₁ connector and 3.375" studs spacing meet ANSI 39.1 standard for switch board meters. J1 falls within existing "Barrel" cutout.